

EASY PIPE REPAIR AND INSTALLATION COUPLING  
 TECHNICAL DATA SHEET  
 (MANUFACTURED BETWEEN DN20-DN4000mm)

MECHANICAL CLAMPING SLEEVE

(Easy pipe repair and installation clamping sleeves)

<p>Body Width : 210mm</p>		<p>OD : Pipe outside diameter                      B : Body width                      C : Leakage range                      Rmax : Distance between two pipe ends</p>
<p>Body Width : 330mm</p>		<p>OD : Pipe outside diameter                      B : Body width                      C : Leakage range                      Rmax : Distance between two pipe ends</p>
<p>Body Width : 420mm</p>		<p>OD : Pipe outside diameter                      B : Body width                      C : Leakage range                      Rmax : Distance between two pipe ends</p>

- 1-Rubber Gasket
- 2-Stainless Steel Body
- 3-Clutch Drive Plate
- 4-Rubber Gasket Conjunction Spot

**Flexible Type**

With single piece body ( above AD: 300 mm, 2-piece body recommended )

**Repair Type**

With 2- piece body ( above AD: 160 mm, 2-piece body recommended)

They are used for easy and rapid repair and installation of all kinds of pipes (Steel, HDPE, CTP, GRP, DUCTILE FONT, etc.)

They provide flexible and full safe impermeability, used in pipe systems operating between light-vacuum and 25 bar pressure.

BODY: AISI 304 (Optional: AISI 316 or 316 L, 316 TI, AISI 1024 Hot dipped galvanized steel.)

GASKET: EPDM: (-20°C / +110°C) water, waste water, acid-basic  
NBR : (-30°C / +90°C) gas-oil-fuel-organics

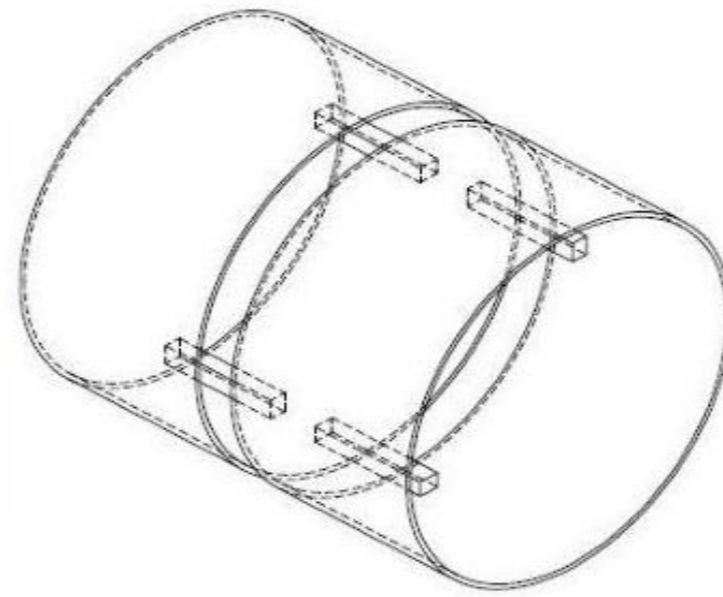
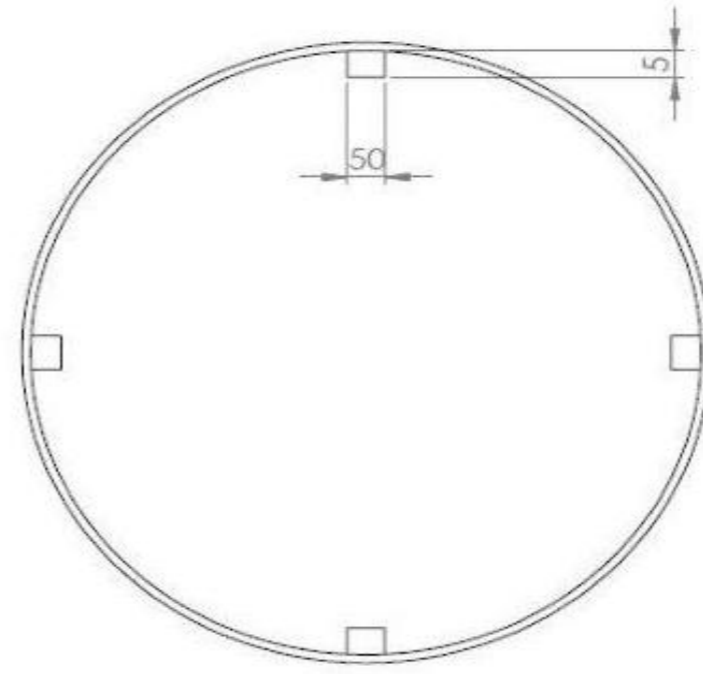
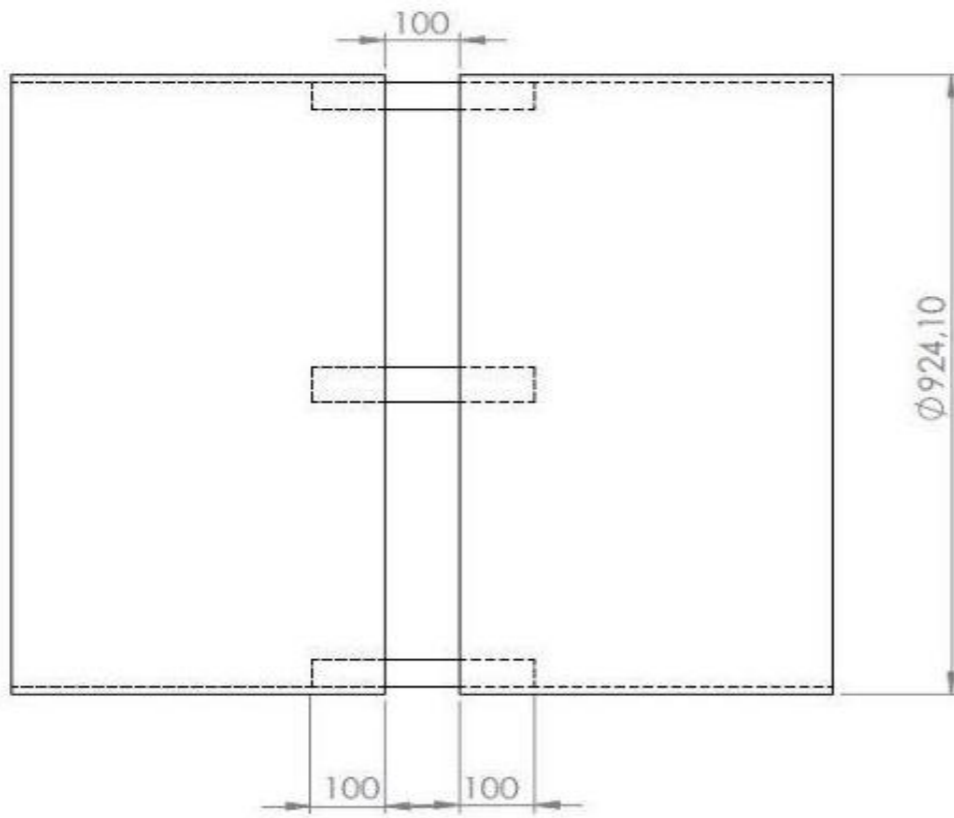
Diameter of Pipe	Installation Tolerance	Operation Pressure (PN)	Body Width (B)
20	±3	16-25-40	56
25	"	16-25-40	56
32	"	16-25-40	76
40	"	16-25-40	76
50	"	16-25-40	76
65	"	16-25-40	105
80	"	16-25-40	105
100	"	16-25-40	105
125	"	16-25-40	120
150	"	16-25-40	120-135-152
200	"	2,5-6-10-16-25-40	135-152-210-330-420
250	"	2,5-6-10-16-25-40	135-152-210-330-420
300	"	2,5-6-10-16-25-40	135-152-210-330-420
350	±5	2,5-6-10-16-25-40	135-152-210-330-420
400	"	2,5-6-10-16-25-40	135-152-210-330-420
450	"	2,5-6-10-16-25-40	135-152-210-330-420
500	"	2,5-6-10-16-25-40	135-152-210-330-420
550	"	2,5-6-10-16-25-40	135-152-210-330-420
600	"	2,5-6-10-16-25-40	135-152-210-330-420
700	"	2,5-6-10-16-25	135-152-210-330-420

Diameter of Pipe	Installation Tolerance	Operation Pressure (PN)	Body Width (B)
800	±5	2,5-6-10-16-25	135-152-210-330-420
900	"	2,5-6-10-16-25	135-152-210-330-420
1000	"	2,5-6-10-16-25	135-152-210-330-420
1100	"	2,5-6-10-16-25	135-152-210-330-420
1200	"	2,5-6-10-16-25	135-152-210-330-420
1400	"	2,5-6-10-16	135-152-210-330-420
1500	"	2,5-6-10-16	135-152-210-330-420
1600	"	2,5-6-10	135-152-210-330-420
1800	"	2,5-6-10	135-152-210-330-420
2000	"	2,5-6-10	135-152-210-330-420
2200	"	2,5-6-10	135-152-210-330-420
2400	"	2,5-6	135-152-210-330-420
2600	"	2,5-4	135-152-210-330-420
2800	"	2,5-4	135-152-210-330-420
3000	"	2,5-4	135-152-210-330-420
3200	"	2,5-6-10	135-152-210-330-420
3400	"	2,5-6-10	135-152-210-330-420
3600	"	2,5-6	135-152-210-330-420
3800	"	2,5-4	135-152-210-330-420
4000	"	2,5-4	135-152-210-330-420

Bakir Pirinc San.Sit. Mustafa Kurtoglu cad.No:11 Erse is Mrk. K:4 34524 Beylikduzu / ISTANBUL-TURKEY  
Phone:+90 212 875 99 22 Fax: +90 212 876 55 26

[www.bortek.com](http://www.bortek.com)

e-mail: [info@bortek.com.tr](mailto:info@bortek.com.tr)



HIGH TEMPERATURE FEATURES					
Temperature ( C)	100	200	300	400	500
Modulus of elasticity (Gpa)	194	186	180	172	165
%0.2 Yield strength (Mpa)	157	127	110	98	92
% 1 Yield strength (Mpa)	191	157	135	125	120
coefficient of thermal expansion(1/K)	16	16	17	18	18